



EAS AM System Product Manual

(AM100, External power supply)

Version: V1.1.0

Date: April. 2025

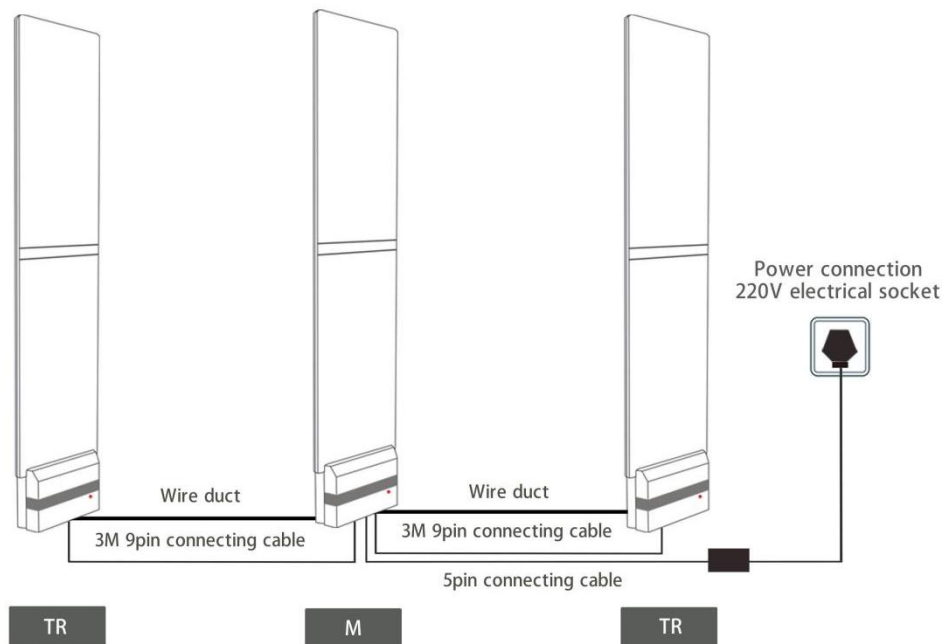
Attention

The installation method mentioned in this manual is the wire trough installation method. If it is installed by cutting grooves or pre-embedding the ground wire, the installation method will be slightly different. For specific details, please consult the sales you contacted with.

1. Install required tools

Name	Picture	Name	Picture	Name	Picture
Phillips screwdriver		Expansion screw		Wrench	
Marker pen		Impact drill		Hammer	
Wire duct					

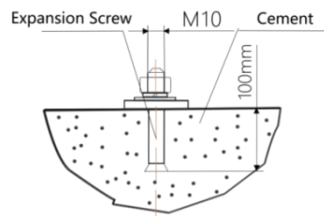
2. Equipment installation



(Wiring diagram)

➤ **Installation steps (trunking installation method):**

- (1) Prepare all equipment to install and inventory all accessories;
- (2) After clarifying the system composition and working mode, carry out overall planning and arrange the equipment according to the provided installation distance;
- (3) Before fixing the anti-theft Antenna, first power on to test whether the installation distance is feasible, so that the installation plan can be changed according to the site conditions. For the power on method, refer to item (7);
- (4) After the power-on test is completed, arrange the equipment according to the installation distance confirmed by the test, mark the holes, and then remove the equipment;
- (5) Mark the hole positions, drill the holes, and pre-embed M10*100 expansion bolts;



(Foot installation basic diagram)

- (6) Move the anti-theft antenna back to the installation position, pre-tighten the nuts, and secure the device;
- (7) Refer to the wiring diagram, put the 9Pin connecting cable into the cable trough, connect master and slave antennas, and finally plug in the power supply;
- (8) Tighten the anchor nuts after the status inspection and functional test passed;

✧ **Testing methods:**

Hold a EAS AM tag and walk through the middle of each channel. If the system alarm can be triggered, it proves that the antenna is normal. If not, you need to debug through the software to see what the problem is. You can contact after-sales personnel for details.



Warning

- The EAS Antenna needs to be connected to a dedicated power line (110V or 220V). The neutral wire, live wire and ground wire are connected from the power supply box for the EAS antenna. Other electrical devices do not share the power line of the device to avoid interference with the EAS Antenna.
- If the power supply used by EAS antenna is left neutral wire and right live wire, then the socket should also be left neutral wire and right live wire, so that there will be no line position conflict.
- If the installation environment interferes with the EAS system, it is necessary to perform phase debugging on the EAS system and then check the interference sources one by one.
- When installing the equipment, wire connection needs to be operated with the power off condition. After all the connecting wires are connected, power on again. Do not unplug any wire interface on the main board at will when the power is on.
- If need to unplug the EAS antenna connection wire, you need to turn off the power first and then operate. Do not unplug the connection wire when it is powered on.
- During the installation process, if you need to thread the wire through the conduit, please remove the terminal first. After threading the conduit, please reconnect it to the terminal according to the corresponding color.
- After EAS antenna installed, it is necessary to check whether there is an anti-theft tag left within 1.5 meters of the device. If there is, remove the tag first and then restart the EAS antenna. Otherwise the anti-theft device may continue to sense and cause a continuous alarm.
- The EAS antenna should not be installed too close to the wall. It is recommended to install it about 10~20 cm away from the wall. It' d better also not to install it too closed to large electrical appliances such as air conditioners and elevators to avoid interference.
- If you need to replace a new master board or slave board, you need to remove the old board first then install the new board, tighten the screws, connect the wires and then power on. Otherwise it is easy to cause a short circuit on the main board.

- The specific installation is shown in the picture below:



Use a screwdriver to remove the bottom case screws



Remove the bottom case

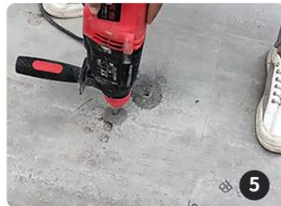


Place Antenna in the installation position

Fixed Antenna



Use a pen to mark the position where the expansion screws fixed. After marking, remove the anti-theft device

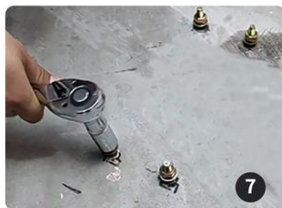


Use impact drill to drill holes at marked positions and a hammer to drive the expansion screws into the holes

PS: If floor bottom is hollow, you need to drill by a water drill first, and then drill to the bottom with an impact drill



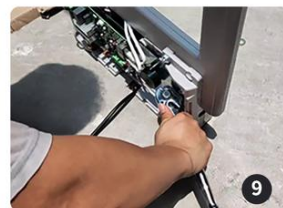
Use a hammer to drive the expansion screw into the hole



Use a wrench to remove the nut and washer of the expansion screw



Put the anti-theft system back into place and reinstall the nuts and washers



Use a wrench to tighten the nut then anti-theft antenna fixed

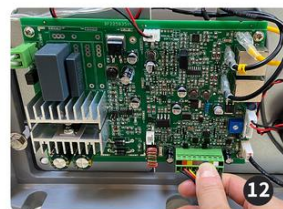
Line Connection



To prevent the cables from being exposed, put all the cables into the wire duct



One end of the 9PIN cable is connected to the 9PIN port on the master antenna



The other end of the 9PIN cable is connected to the 9PIN port on the slave antenna



Connect the 5PIN cable of the external power supply to the 5PIN port of the master antenna



Plug it into the socket to power on the antenna



Use a screwdriver to re-tighten the removed screws



Dongguan Lifangmei Electronic Technology Co., Ltd

Email: sales@lifmei.com
www.lifangmei.com; www.emenotec.com